

A forum for woodworkers of all skill levels to share their common interests

NORTHWEST WOODWORKERS' GUILD

THE SAWDUST NEWS

June 2009

Next Meeting:

Mike Magruder

CNC Routers

Thursday

June 25, 2009

6:30 PM

Woodcraft Supply

5963 Corson Avenue

Seattle, Washington

206-767-6394

(directions: Page 2)

President's Message

— by Jack Martin

Special thanks to Don McNutt for his excellent presentation which was described as the “*Big Event of the Evening.*” Don had his steaming equipment in the parking lot of Woodcraft Supply and he bent several pieces into appropriate forms while describing the process in detail. Thank you, Don, for your excellent presentation, and also special thanks to Michele and Ron Hall – Woodcraft Supply for hosting the meeting.



Mark your calendar for the Annual Picnic Thursday, July 16th at Ed Moore's house in Renton. Everyone is welcome and we encourage you to bring your family, children, grandchildren. We will provide the beverages and entrees and ask each family to bring either a salad or dessert. Our schedule is to start about 4:00 p m, meeting will be 5:00 p m and the picnic/food will start at 6:00 p m. The picnic will be an evening of fun with good food, good program, good weather and an opportunity to meet the families of your woodworking friends. RSVP to Ed Moore at 253 854 5781(h) 206 714 4336(c) or email ed_marly@msn.com Please RSVP by the end of June so we can estimate our purchasing needs.

Meeting Schedule for June, July, August and September 2009:

June Meeting at Woodcraft Supply on Thursday, 06/25/09 at 6:30p.m. Mike Magruder will present a program on “CNC” Routers.

July Meeting at Ed Moore's house in Renton on Thursday, 7/16/09 at 5:00 p m) (**Note the time, Date and Place change**). Richard Smith will present a program on how to beautify your project using shells and stone inlays to enhance your jewelry boxes or furniture pieces.

August Meeting at Woodcraft Supply on Thursday, 8/28/09 at 6:30 p m. Chris Green will demo how he uses his router to form unique shapes.

September Meeting at Woodcraft Supply on Thursday 9/24/09 at 6:30 p m. Bill Wiley will present his unique program on Sharpening

Our next meeting will be at Woodcraft Supply on Thursday. June 25/2009 At 6:30 p m. Mike Magruder will present his program on CNC Routers. Mike will bring pieces from a CNC machine for the attendees to see, discuss the pros and cons of the machine, give an overview of its programming, and have photos of the CNC Machine. This will be a presentation you won't want to miss.....come early and check out the large inventory of woodworking supplies that Woodcraft Supply has in stock.....and remember to bring your” **show and tell items**”

NOTE: We have programs scheduled thru September and are in need of programs for October and December to finish out the year. We need YOUR help to volunteer to provide a program for October and December.....sign up now.

Guild Officers

President—Jack Martin
jm4sailing@yahoo.com
425-885-4282

Treasurer/Membership
Bob Schaefer
bobanddoriss@earthlink.net
206-282-4905

Programs

Need volunteers Please

Library—Don Strong
dswood4fun@aol.com
206-285-7733

Newsletter—Steve Krauss
catbert@oz.net
425-746-5067

A forum for woodworkers of all skill levels to share their common interests



Northwest Woodworkers Guild
Steve Krauss, Newsletter Editor
16204 Main St
Bellevue, WA 98008

Member's Discounts

All members in good standing receive a membership card that will allow them to get a discount at the stores listed below:

Crosscut Hardwoods
4100—1st Avenue S.,
Seattle 98134
10% Discount

Rockler Woodworking
3823 Stone Way N.
Seattle 98103
345 Tukwila Pkwy
Tukwila 98188
10% Discount (not valid on power tools)

Woodcraft Supply
5963 Corson S.,
Seattle 98108
10% Discount (not valid on power tools or workbenches)

Edensaw Woods
8032 S. 194th St.
Kent, WA 98032

Please present your current membership card to receive your discount.

Woodshop News

Looking for an events calendar? Something fun to read that's free? Woodworking tips and articles? Go to <http://www.woodshopnews.com/>. This is a great source for woodworking events across the country.

Directions to Woodcraft Supply

From I-5: Take the Michigan Street Exit. Just before the traffic light on Michigan, you will see Woodcraft Supply in the shopping center on your right. The address is 5963 Corson Avenue, Seattle, 206-767-6394.

Monthly Raffle

Each month the Guild holds a raffle to raise money for the treasury. We use these funds to support our Guild meeting activities. There will be a donation of a LARGE sheet of veneer that will go to one lucky winner. Tickets are quite affordable. Be sure to come to the meetings and enter to win one of the great prizes we have to give away in our raffle.

May Meeting



Bob Schaefer calls the meeting to order!



Rick Tydings handles the Monthly Raffle.



Rick Tydings discusses plans for a Finishing Workshop.

May Program

Steam Bending by Don McNutt



May Show-And-Tell



May Show-And-Tell



SHOP PROJECT

Cut thin strips easily and safely with this shop-made accessory



Table Saw Insert

Ripping small strips on a table saw can be both troublesome and dangerous. On most saws, the opening between the blade and the insert is just wide enough to allow narrow strips to fall in and jam the blade.

The best way to solve this problem is to replace the metal insert that came with your saw. Using a small piece of UHMW plastic (see page 2) and some scrap hardboard from your shop, you can make your own "zero-clearance" insert. This not only prevents strips from getting

jammed, but also reduces chipout on the bottom of your workpiece.

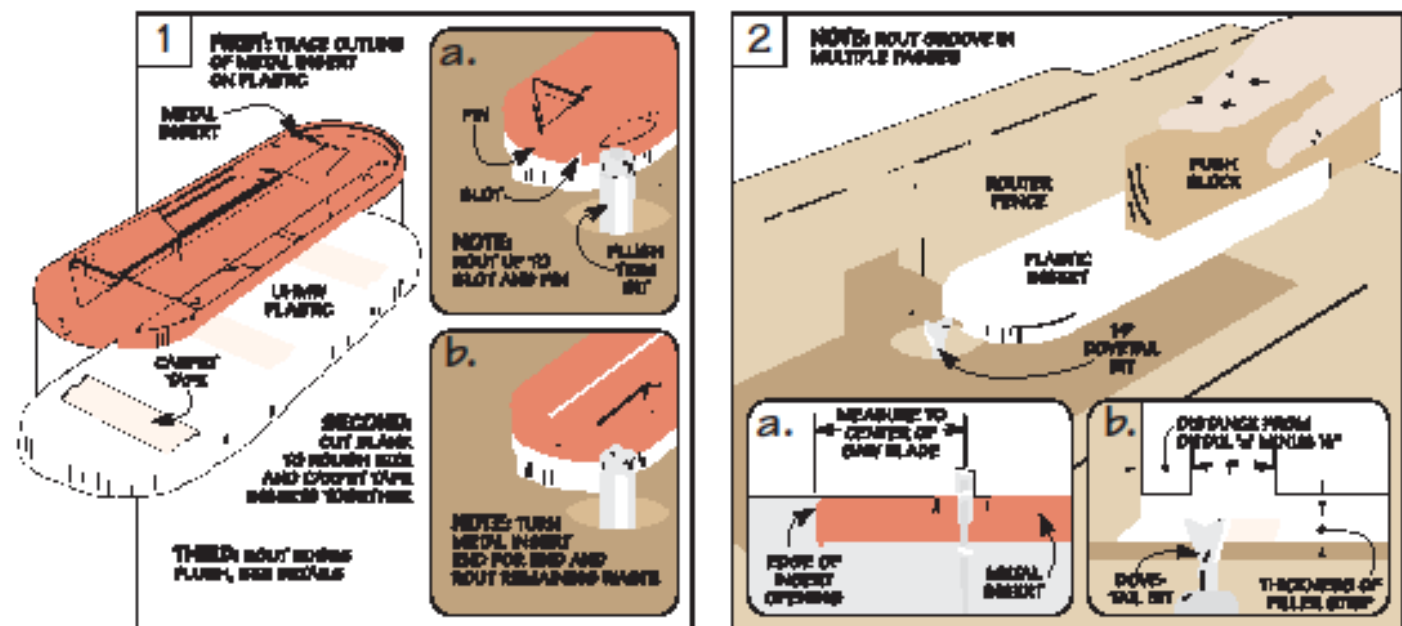
The insert also features a replaceable filler strip (see inset photo) that can be changed to accommodate different blade widths. Plus, it has a built-in splitter that prevents the kerf from closing and pinching the saw blade.

CUT ROUGH INSERT. Start this project by cutting an oversize blank of UHMW. Note: To allow for leveling screws (added later), the blank should be within $\frac{1}{16}$ " of the thickness of your metal insert.

To fit the insert into the opening in the saw table, you'll need to cut the blank to the same shape as the metal insert. So start by tracing the shape of the metal insert onto the blank, see Fig. 1.

After cutting the blank to rough size, it's just a matter of carpet-taping the two inserts together and routing the edges flush. (I used a flush trim bit in a table-mounted router.)

The thing to watch here is that most metal inserts have an open slot at one end for the splitter on the table saw. And there's usually



Northwest Woodworker's Guild Picnic



Special Thanks to Ed and Marly Moore who are hosting our Picnic/July meeting for the third year in a row. Mark your calendar for Thursday, July 16th at Ed and Marly Moore's house in Renton. Everyone is welcome and we encourage you to bring your family, children, grandchildren. We will provide the beverages and entrees and ask each family to bring either a salad or dessert. Our tentative schedule is start about at 4:00 pm, meeting will be at 5:00 p m and the picnic/food will start at 6:00 p m. The picnic should be fun for everyone with good food, good weather and time to spend with your woodworking friends and family.

Activities

- Great Food
- Time With Friends
- Woodworking Demos

Northwest Woodworker's Guild

.....
If you have questions or need additional contact Ed Moore or Jack Martin.

Contact Ed Marly: 253 854 5781(h) 206 714 4336 © or email ed_marly@msn.com

Time: 4:00 PM

Date: July 16, 2009